



Madison Water Utility  
119 E. OLIN AVE.  
MADISON, WI 53713

# CITY OF MADISON

## MADISON WATER UTILITY

### PUBLIC WORKS PLAN OF PROPOSED IMPROVEMENT

PUBLIC IMPROVEMENT PROJECT APPROVED

APPROVED DATE: 11/27/2024

BY THE COMMON COUNCIL OF MADISON, WISCONSIN

PUBLIC IMPROVEMENT DESIGN APPROVED BY:

*Pete Holmgren* 3/10/2026

Pete Holmgren, Chief Engineer Date  
Madison Water Utility

WATER DESIGNED BY:



03/10/2026

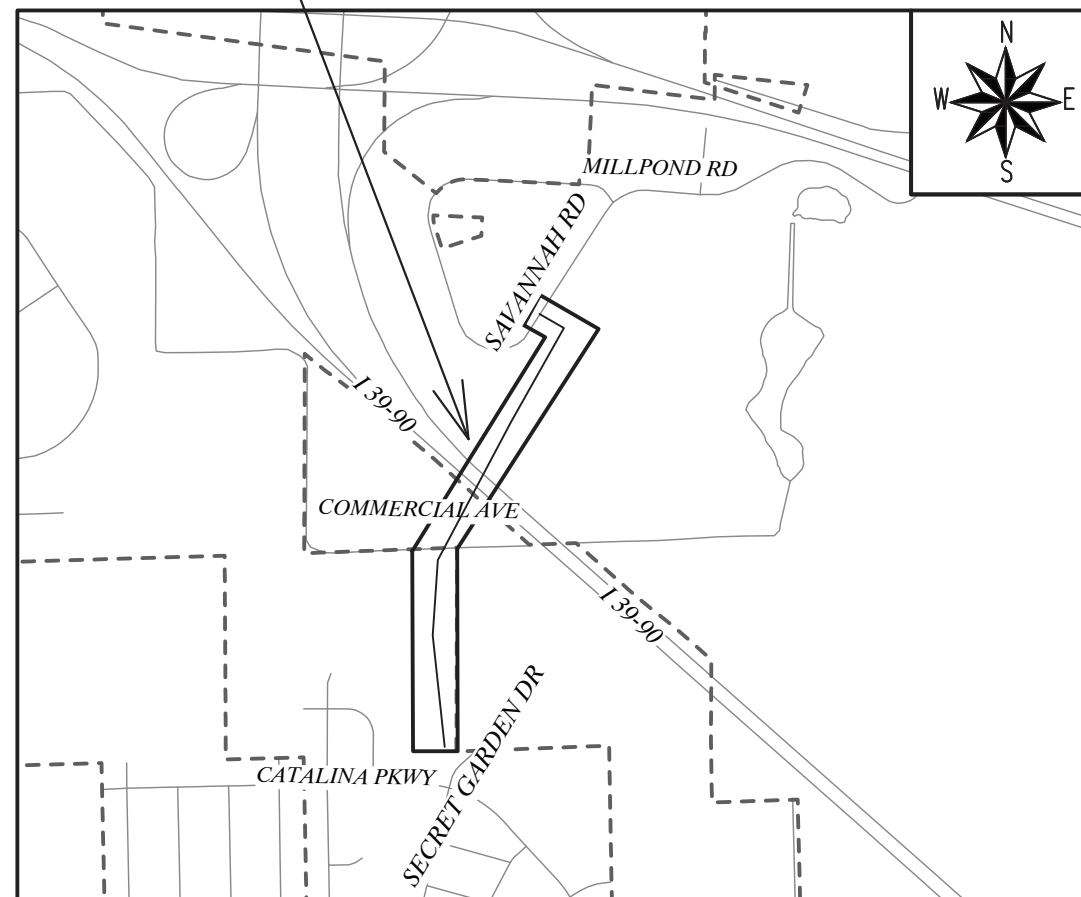
INDEX OF SHEETS

SHEET NO.	1	TITLE SHEET
SHEET NO.	EC1 TO EC2	EROSION CONTROL
SHEET NO.	W-1	OVERVIEW
SHEET NO.	W-2 TO W-3	STAGING PLAN
SHEET NO.	W-4 TO W-10	PLAN & PROFILE
SHEET NO.	W-11	ESTIMATE OF MATERIALS
SHEET NO.	D-1	BERM DETAIL
SHEET NO.	D-2	PAVEMENT DETAIL

### Pressure Zone 4 Interstate Crossing

CITY PROJECT NO. 15165  
CONTRACT NO. 9593

### PROJECT LOCATION



CONVENTIONAL SIGNS	
FIELD VERIFY ALL UTILITY LOCATIONS	
GAS	— G —
STORM SEWER	— ST —
SANITARY SEWER	— SAN —
WATER	— W —
BURIED ELECTRIC	— E —
OVERHEAD ELECTRIC	— OH —
POWER POLE	□

PLOT SCALE: 1" = 1'

PLOT NAME: ---

REV. DATE: 3/10/2026 9:34 AM

ORIGINATOR: CITY\_OF\_MADISON

210.1(f) INLET PROTECTION, RIGID FRAME, REQUIRED AT INLET (TYP.) SEE STD. DETAIL 1.11.

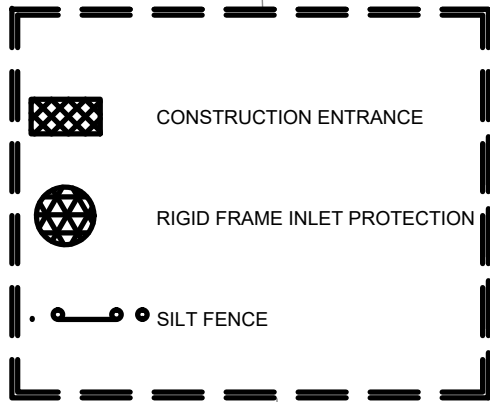
210.1(e) SILT FENCE REQUIRED (TYP.)

APPROXIMATE BORE PIT LOCATION

210.1(e) SILT FENCE REQUIRED

210.1(b) 15'X50' CONSTRUCTION ENTRANCE SEE STD. DETAIL 1.07

210.1(j) WETLAND SEEDING AND MULCH PER 207.3(d) SEE BID ITEM 90002



**EROSION CONTROL NOTES**

1. EROSION CONTROL MEASURES SHALL BE IN PLACE PRIOR TO ANY CONSTRUCTION ACTIVITY.
2. THE CONTRACTOR IS RESPONSIBLE FOR THE CONSTRUCTION AND MAINTENANCE OF ALL EROSION CONTROL MEASURES UNTIL FINAL ACCEPTANCE BY THE CITY OF MADISON
3. THE CONTRACTOR SHALL INSTALL AND MAINTAIN EROSION CONTROL MEASURES IN ACCORDANCE WITH THE WDNR SOC STANDARDS AND CITY OF MADISON STANDARD SPECIFICATIONS.
4. THE CONTRACTOR SHALL PROVIDE STREET CLEANING AS NEEDED ON A DAILY BASIS TO KEEP TRACKING TO A MINIMUM.
5. INLET PROTECTION SHALL BE INSTALLED WITHIN THE CONSTRUCTION LIMITS. ADDITIONAL INLET PROTECTION SHALL BE INSTALLED AS DIRECTED.
6. POLYMER SHALL BE APPLIED TO DISTURBED AREAS AS DIRECTED BY THE CONSTRUCTION ENGINEER.

MARK	REVISION	DATE	BY

15165  
MADISON, WI  
9593  
CONTRACT NO:

EROSION CONTROL & RESTORATION PLAN  
PRESSURE ZONE 4 INTERSTATE CROSSING  
M:\DESIGN\Projects\15165\CAD\Sewers\15165WU - Erosion Control.dwg



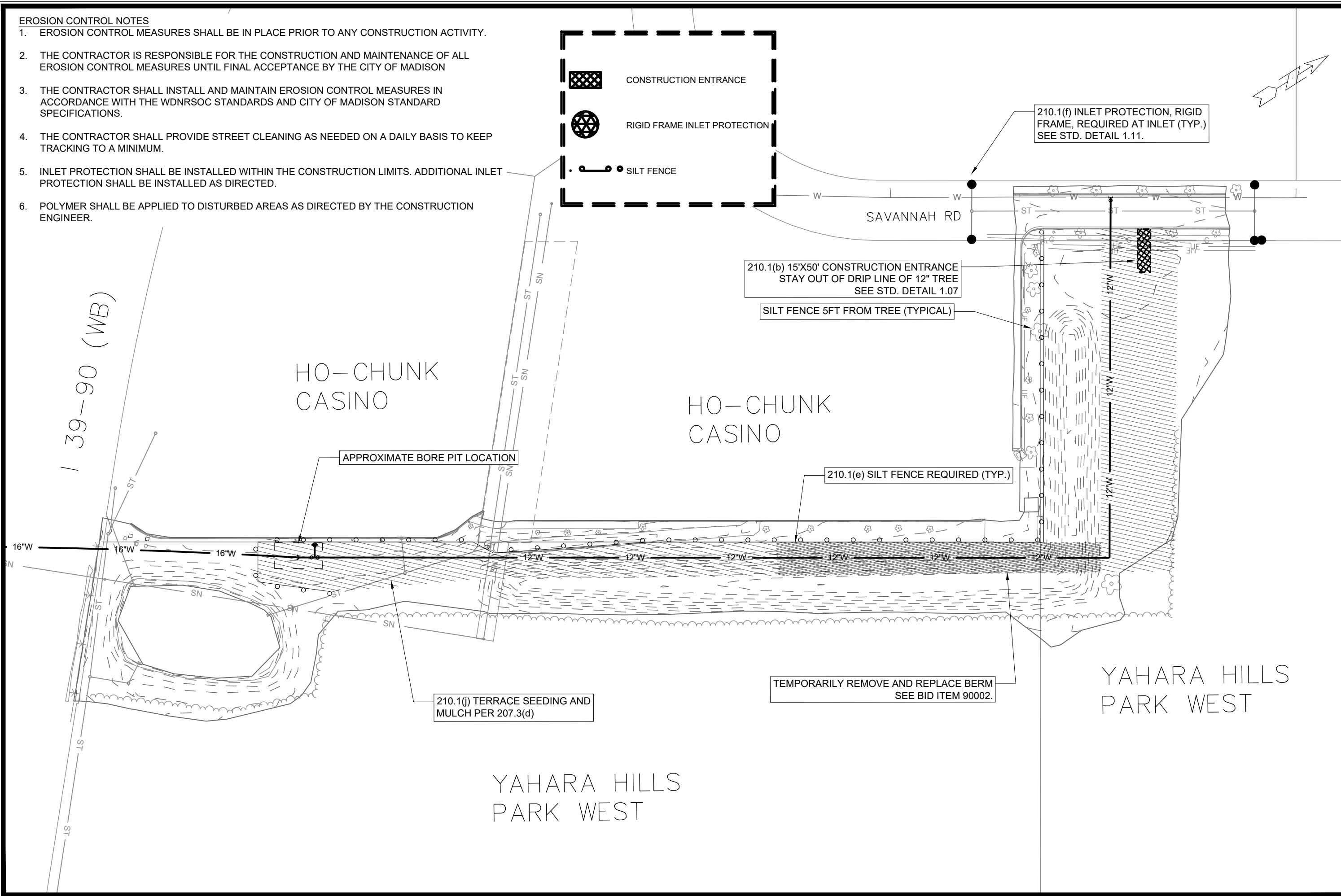
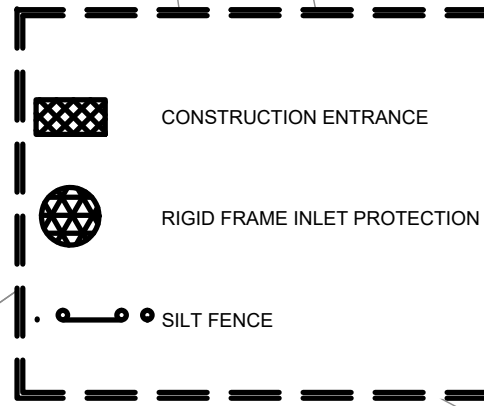
15165  
EC-1

Scale: 1"=100'

Designed By: RJN Date: 5/17/2025 9:38 AM

**EROSION CONTROL NOTES**

1. EROSION CONTROL MEASURES SHALL BE IN PLACE PRIOR TO ANY CONSTRUCTION ACTIVITY.
2. THE CONTRACTOR IS RESPONSIBLE FOR THE CONSTRUCTION AND MAINTENANCE OF ALL EROSION CONTROL MEASURES UNTIL FINAL ACCEPTANCE BY THE CITY OF MADISON
3. THE CONTRACTOR SHALL INSTALL AND MAINTAIN EROSION CONTROL MEASURES IN ACCORDANCE WITH THE WDNR SOC STANDARDS AND CITY OF MADISON STANDARD SPECIFICATIONS.
4. THE CONTRACTOR SHALL PROVIDE STREET CLEANING AS NEEDED ON A DAILY BASIS TO KEEP TRACKING TO A MINIMUM.
5. INLET PROTECTION SHALL BE INSTALLED WITHIN THE CONSTRUCTION LIMITS. ADDITIONAL INLET PROTECTION SHALL BE INSTALLED AS DIRECTED.
6. POLYMER SHALL BE APPLIED TO DISTURBED AREAS AS DIRECTED BY THE CONSTRUCTION ENGINEER.



210.1(f) INLET PROTECTION, RIGID FRAME, REQUIRED AT INLET (TYP.) SEE STD. DETAIL 1.11.

210.1(b) 15'X50' CONSTRUCTION ENTRANCE STAY OUT OF DRIP LINE OF 12" TREE SEE STD. DETAIL 1.07

SILT FENCE 5FT FROM TREE (TYPICAL)

210.1(e) SILT FENCE REQUIRED (TYP.)

TEMPORARILY REMOVE AND REPLACE BERM SEE BID ITEM 90002.

210.1(j) TERRACE SEEDING AND MULCH PER 207.3(d)

APPROXIMATE BORE PIT LOCATION

139-90 (WB)

MARK	REVISION	DATE	BY

15165  
MADISON, WI  
9593

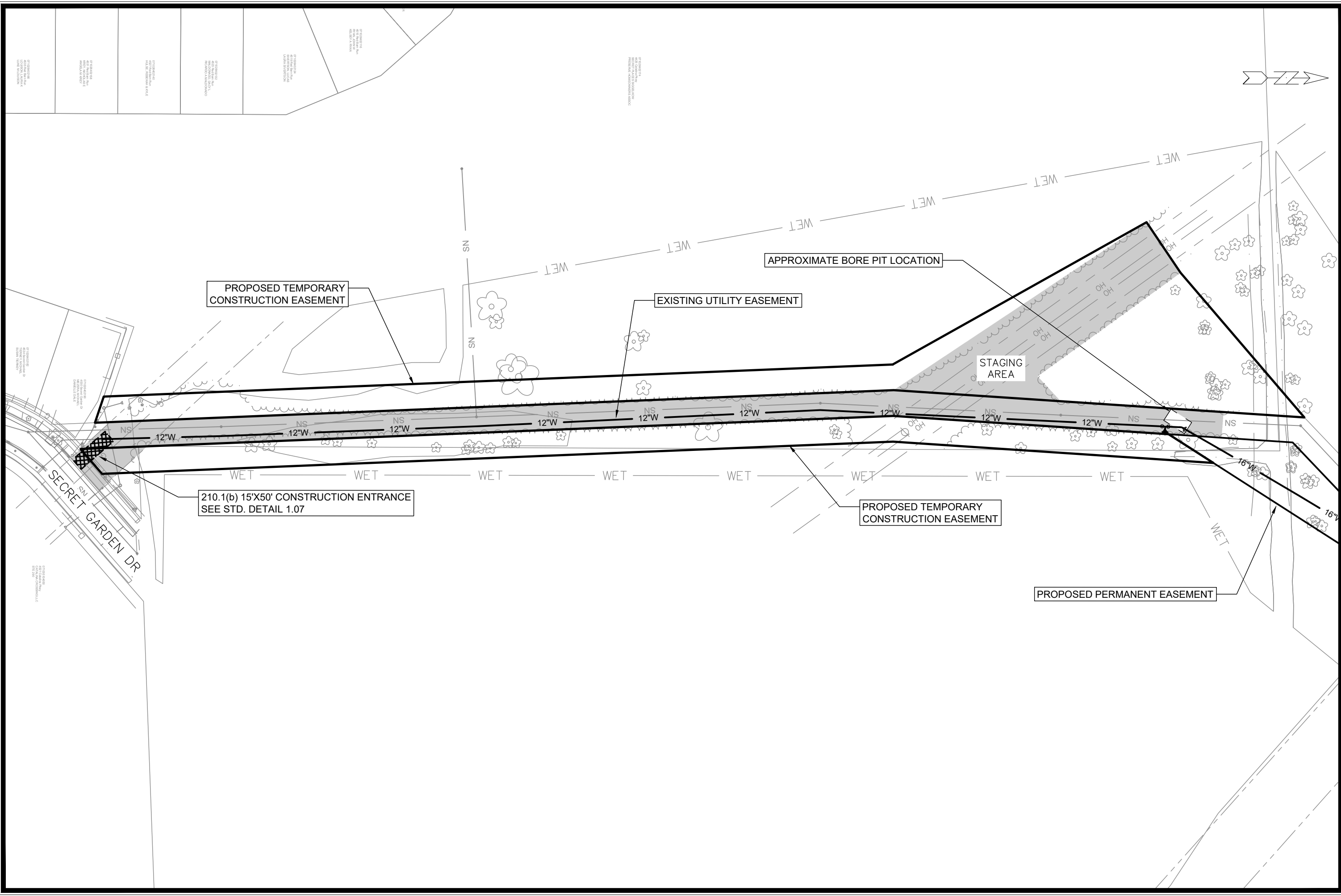
EROSION CONTROL & RESTORATION PLAN  
PRESSURE ZONE 4 INTERSTATE CROSSING  
M:\DESIGN\Projects\15165\CAD\Severs\15165WU - Erosion Control.dwg



15165  
EC-2

Contract No: 15165  
Scale: 1"=100'  
Date: 5/12/2025 9:39 AM





MARK	REVISION	DATE	BY

15165  
 MADISON, WI  
 9593  
 CONTRACT NO:

WATER STAGING PLAN  
 PRESSURE ZONE 4 INTERSTATE CROSSING  
 M:\DESIGN\Projects\15165\CAD\Water\15165WU - Staging & Overview.dwg



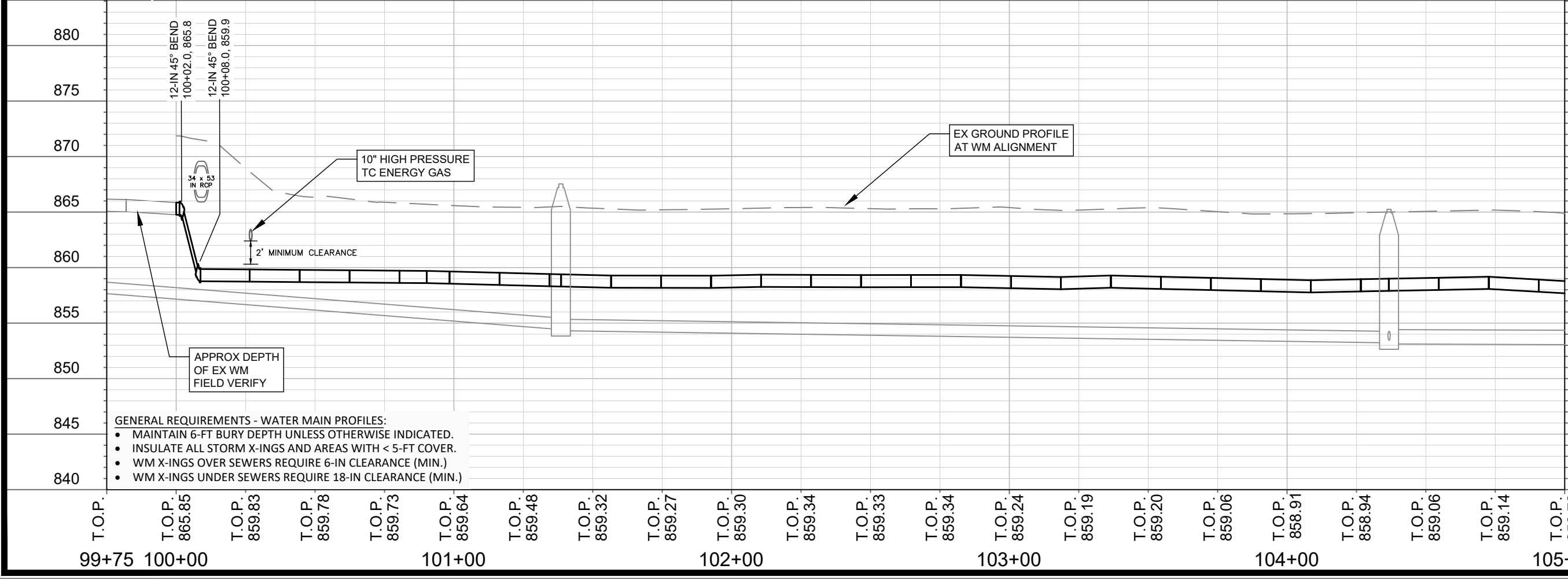
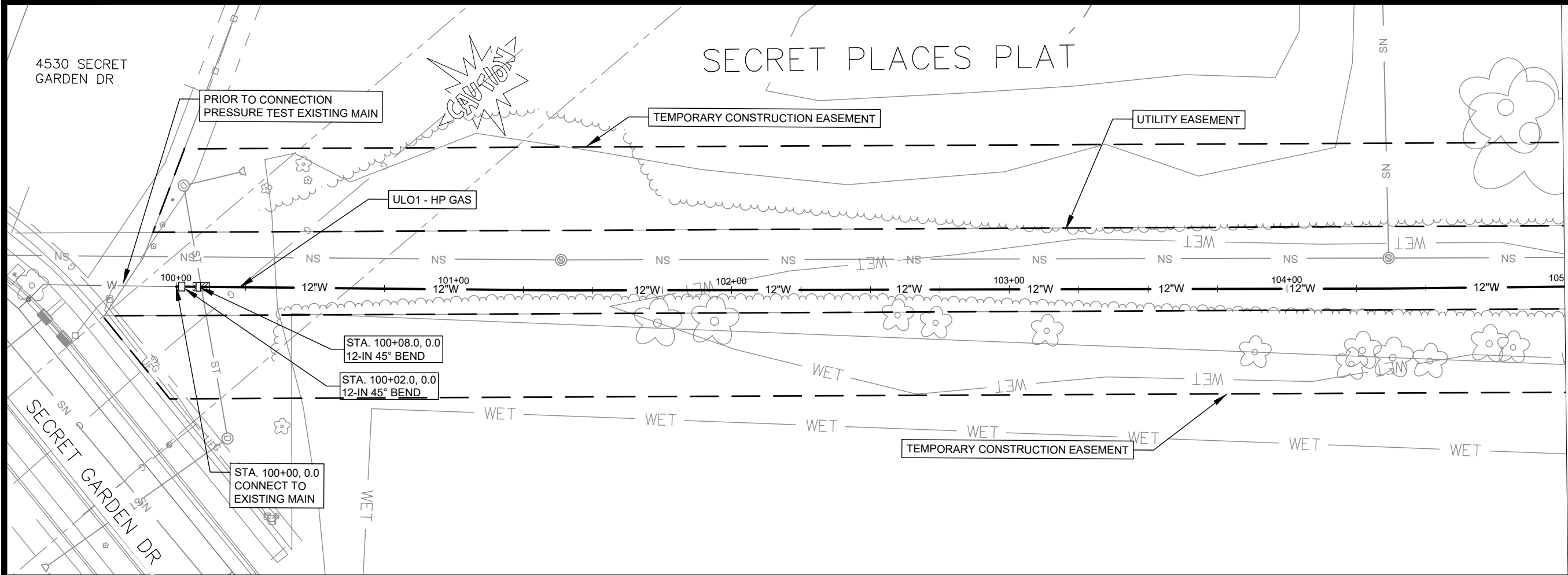
15165  
 W-2

Scale: 1"=100'  
 Date: 5/12/2025 9:39 AM  
 Designed By: RJN  
 15165  
 W-2



4530 SECRET GARDEN DR

# SECRET PLACES PLAT



MATCH LINE STA. 105+00

MARK	REVISION	DATE	BY
15165	5/17/2025 9:39 AM	Scale: #####	W-4

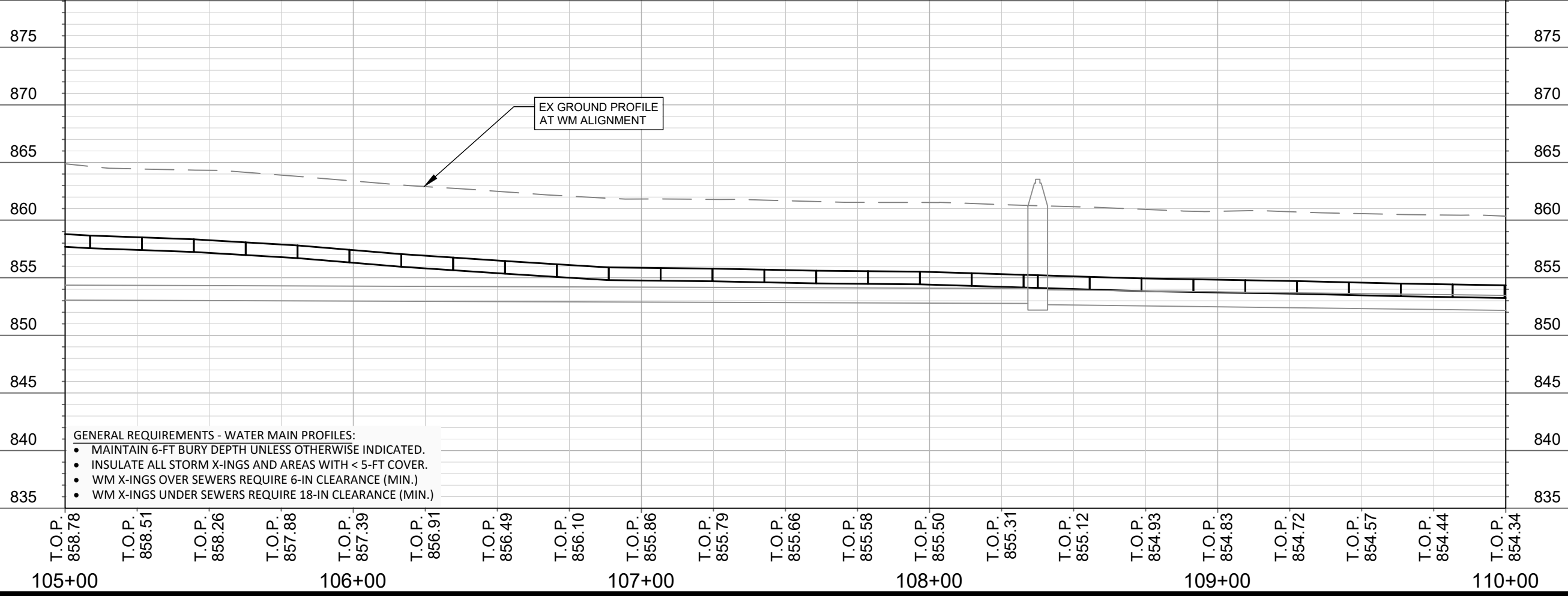
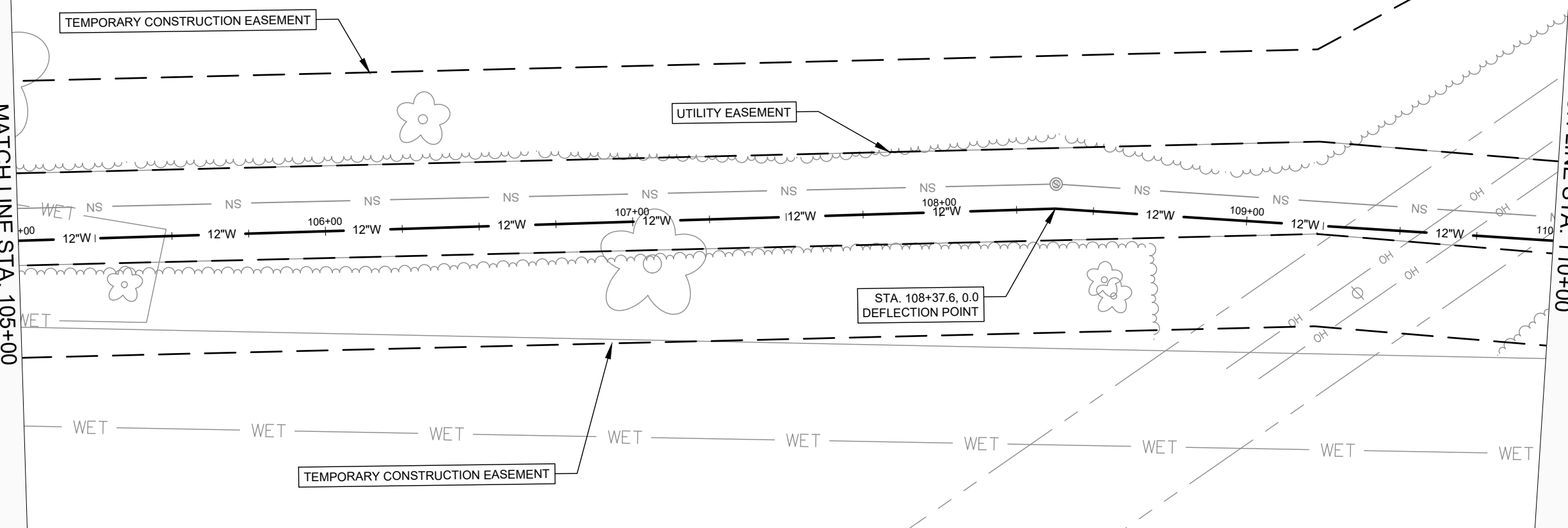
15165  
 MADISON, WI  
 CONTRACT NO: 9593  
 PRESSURE ZONE 4 INTERSTATE CROSSING - WATER PLAN & PROFILE  
 PRESSURE ZONE 4 INTERSTATE CROSSING  
 M:\DESIGN\Projects\15165\CAD\Water\15165WU - PressureNetwork.dwg

15165  
 W-4

# SECRET PLACES PLAT

MATCH LINE STA. 105+00

MATCH LINE STA. 110+00



- GENERAL REQUIREMENTS - WATER MAIN PROFILES:**
- MAINTAIN 6-FT BURY DEPTH UNLESS OTHERWISE INDICATED.
  - INSULATE ALL STORM X-INGS AND AREAS WITH < 5-FT COVER.
  - WM X-INGS OVER SEWERS REQUIRE 6-IN CLEARANCE (MIN.)
  - WM X-INGS UNDER SEWERS REQUIRE 18-IN CLEARANCE (MIN.)

MARK	REVISION	DATE	BY

15165  
 MADISON, WI  
 9593  
 CONTRACT NO:  
 PRESSURE ZONE 4 INTERSTATE CROSSING - WATER PLAN & PROFILE  
 PRESSURE ZONE 4 INTERSTATE CROSSING  
 M:\DESIGN\Projects\15165\CAD\Water\15165WU - PressureNetwork.dwg



15165  
 W-5







MATCH LINE STA. 125+00

MATCH LINE STA. 130+00

HO-CHUNK CASINO

YAHARA HILLS PARK WEST

D1A  
D-1  
STA. 126+95 START TEMPORARILY REMOVE AND REPLACE BERM BID ITEM 90002

EXISTING BERM

EX GROUND PROFILE AT WM ALIGNMENT

125+00 12" W 126+00 127+00 128+00 129+00 130+00

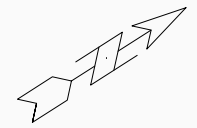
880  
875  
870  
865  
860  
855  
850  
845  
840

880  
875  
870  
865  
860  
855  
850  
845  
840

- GENERAL REQUIREMENTS - WATER MAIN PROFILES:
- MAINTAIN 6-FT BURY DEPTH UNLESS OTHERWISE INDICATED.
  - INSULATE ALL STORM X-INGS AND AREAS WITH < 5-FT COVER.
  - WM X-INGS OVER SEWERS REQUIRE 6-IN CLEARANCE (MIN.)
  - WM X-INGS UNDER SEWERS REQUIRE 18-IN CLEARANCE (MIN.)

T.O.P. 858.01 T.O.P. 858.48 T.O.P. 858.56 T.O.P. 858.66 T.O.P. 858.77 T.O.P. 858.88 T.O.P. 859.09 T.O.P. 859.24 T.O.P. 859.34 T.O.P. 859.39 T.O.P. 859.46 T.O.P. 859.54 T.O.P. 859.58 T.O.P. 859.59 T.O.P. 859.63 T.O.P. 859.76 T.O.P. 859.77 T.O.P. 859.83 T.O.P. 859.96 T.O.P. 860.17 T.O.P. 860.35

125+00 126+00 127+00 128+00 129+00 130+00



MARK	REVISION	DATE	BY
15165	5/17/2025 9:39 AM	###	###
Designed By: RJN		Scale: #####	
15165		W-9	

15165  
MADISON, WI  
9593  
CONTRACT NO:  
PRESSURE ZONE 4 INTERSTATE CROSSING - WATER PLAN & PROFILE  
PRESSURE ZONE 4 INTERSTATE CROSSING  
M:\DESIGN\Projects\15165\CAD\Water\15165WU - PressureNetwork.dwg



15165  
W-9



**CONSTRUCTION NOTES:**

- CONSTRUCT NEW WATER MAIN 6.0' BELOW FINISHED GRADE, UNLESS OTHERWISE NOTED. INSULATE MAIN WITH POLYSTYRENE BOARD AT STORM CROSSINGS AND OTHER AREAS IDENTIFIED BY ENGINEER AS HAVING INADEQUATE COVER.
  - VERIFY SIZE OF EXISTING WATER SERVICES AND RECONNECT SERVICES AS INDICATED.
  - MINIMIZE DISRUPTION OF SERVICE TO CUSTOMERS. NOTIFY PER CONTRACT REQUIREMENTS OF ANY PLANNED WATER OUTAGE.
- |        |   |
|--------|---|
| WN-1   | REPLACE THE EXISTING LEAD SERVICE WITH A NEW COPPER SERVICE.  |
| WN-2   | EXTEND AND RECONNECT THE EXISTING COPPER SERVICE TO THE NEW WATER MAIN.   |
| WN-3   | EXISTING SERVICE TO BE ABANDONED WHEN THE WATER MAIN IS CUT OFF.  |
| WN-4   | DISCONNECT FROM THE OLD WATER MAIN AND RECONNECT THE EXISTING COPPER WATER SERVICE LATERAL TO THE NEW WATER MAIN. |
| WN-5   | RELOCATE THE EXISTING FIRE HYDRANT.   |
| WN-6   | ABANDON WATER VALVE ACCESS STRUCTURE.   |
| WN-7   | FURNISH AND INSTALL THE NEW TOP SECTION FOR THE WATER ACCESS STRUCTURE.   |
| WN-8   | ABANDON THE VALVE BOX.  |
| WN-9   | FURNISH THE DITCH, COMPACTION, AND ALL MATERIALS AND LABOR FOR THE INSTALLATION OF NEW SERVICE LATERAL.           |
| WN-10  | REMOVE AND SALVAGE EXISTING HYDRANT   |
| WN-11  | REPLACE THE EXISTING COPPER SERVICE WITH A COPPER SERVICE   |
| WN-20+ | SEE WATER IMPACT PLAN FOR CONNECTION POINT ISOLATION AND WATER SHUT-OFF NOTIFICATION INFORMATION.                 |

**\*ESTIMATE OF MATERIALS SUPPLIED BY CONTRACTOR:**

PAY ITEM ID	DESCRIPTION	QUANTITY	UNIT
20303	SAWCUT ASPHALT PAVEMENT	40	L.F.
20322	REMOVE CONCRETE CURB & GUTTER	40	L.F.
20323	REMOVE CONCRETE SIDEWALK & DRIVE	120	S.F.
20701	TERRACE SEEDING	6700	S.Y.
21002	EROSION CONTROL INSPECTION	5	EACH
21011	CONSTRUCTION ENTRANCE	2	EACH
21013	STREET SWEEPING	1	LUMP SUM
21022	SILT FENCE - PROVIDE INSTALL & MAINTAIN	2100	L.F.
21049	INLET PROTECTION RIGID FRAME - PROVIDE & INSTALL	8	EACH
21050	INLET PROTECTION RIGID FRAME - MAINTAIN	8	EACH
21051	INLET PROTECTION RIGID FRAME - REMOVE	8	EACH
30201	TYPE A CONCRETE CURB & GUTTER	40	L.F.
30301	5" CONCRETE SIDEWALK	120	S.F.
40102	CRUSHED AGGREGATE BASE COURSE, GRADATION NO. 2	15	TON
40202	HMA PAVEMENT 4 LT 58-28 S	30	TON
40218	TACK COAT	20	GAL
40301	FULL WIDTH GRINDING	225	S.Y.
50226	UTILITY TRENCH PATCH TYPE III	50	S.Y.
50801	UTILITY LINE OPENING	3	EACH
70002	FURNISH AND INSTALL 6 INCH PIPE & FITTINGS	40	L.F.
70005	FURNISH AND INSTALL 12 INCH PIPE & FITTINGS	2700	L.F.
70013	HORIZONTAL DIRECTIONAL DRILL 16 INCH PIPE	900	L.F.
70034	FURNISH AND INSTALL 12-INCH WATER VALVE	4	EACH
70040	FURNISH, INSTALL AND SALVAGE HYDRANT	2	EACH
70080	CUT-IN OR CONNECT TO EXISTING WATER SYSTEM	1	EACH
70081	FURNISH EXCAVATION AND DITCH FOR LIVE TAP	1	EACH
70101	FURNISH AND INSTALL STYROFOAM	10	EACH
70107	REMOVAL OF EXCESS AMOUNTS OF BOULDERS	10	C.Y.
90001	WETLAND SEEDING	6700	S.Y.
90002	TEMPORARILY REMOVE & REPLACE BERM	1	LUMP SUM
90003	CONSTRUCTION STAKING	1	LUMP SUM

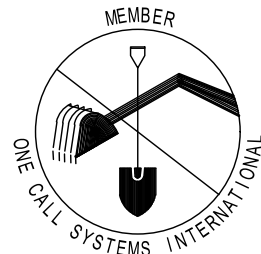
**\*ESTIMATE OF MATERIALS SUPPLIED BY WATER UTILITY:**

12X12-IN TAPPING SLEEVE & VALVE	1	EACH
---------------------------------	---	------

\* ESTIMATE OF MATERIALS IS FOR INFORMATION ONLY. ENGINEER DOES NOT GUARANTEE ACCURACY OF MATERIAL TAKE-OFF.

TO OBTAIN LOCATION OF PARTICIPANTS' UNDERGROUND FACILITIES BEFORE YOU DIG IN WISCONSIN  
 CALL DIGGERS HOTLINE TOLL FREE  
 811 OR 1-800-242-8511  
 FAX-A-LOCATE 1-800-338-3860  
 TDD (FOR HEARING IMPAIRED) 1-800-542-2289

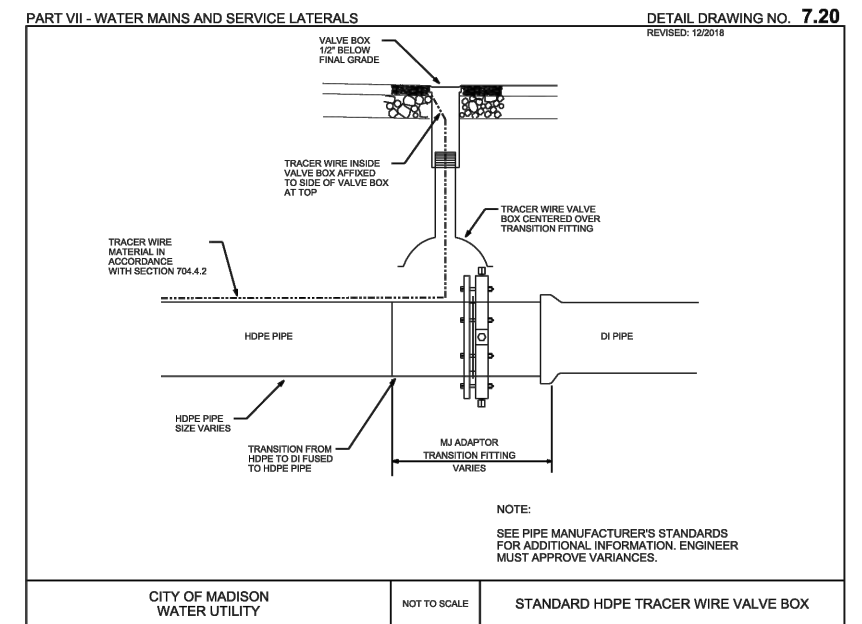
WIS. STATUTE 182.0175 (1974) REQUIRES MIN. OF 3 WORK DAYS NOTICE BEFORE YOU EXCAVATE.



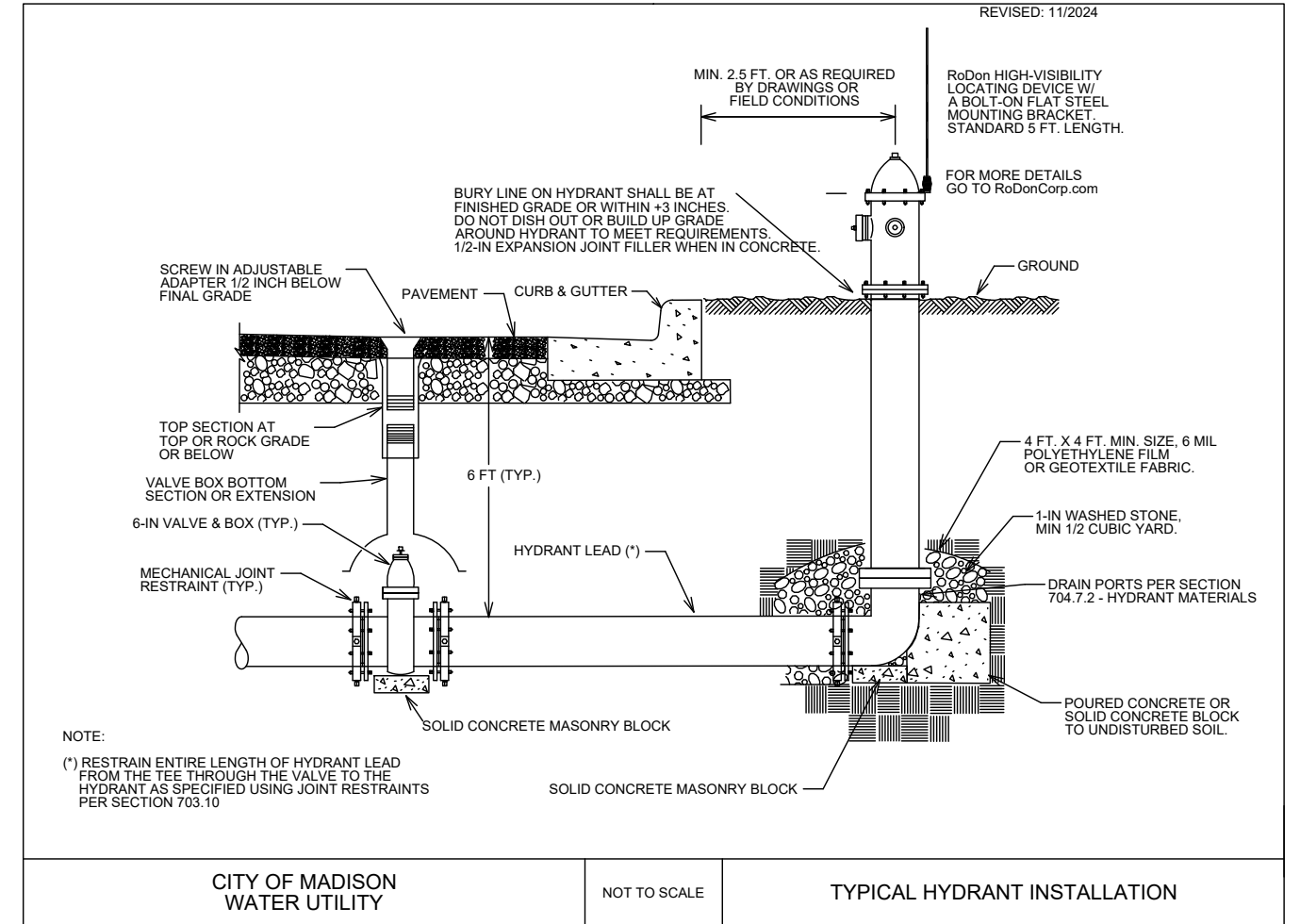
DISCLAIMER NOTE: UTILITY LOCATIONS SHOWN ARE APPROXIMATE ONLY. IT SHALL BE THE CONTRACTOR'S RESPONSIBILITY TO DETERMINE THE EXACT HORIZONTAL AND VERTICAL LOCATION OF ALL EXISTING UNDERGROUND AND OVERHEAD UTILITIES PRIOR TO COMMENCING WORK.

**WATER UTILITY ULO SCHEDULE**

ULO	UTILITY	STATION	OFFSET	SHEET
1	HP GAS	100+23	0 RT	W-4
2	ELEC	134+40	0 RT	W-10
3	GAS	134+49	0 RT	W-10



**PART VII - WATER MAINS AND SERVICE LATERALS DETAIL DRAWING NO. 7.04**



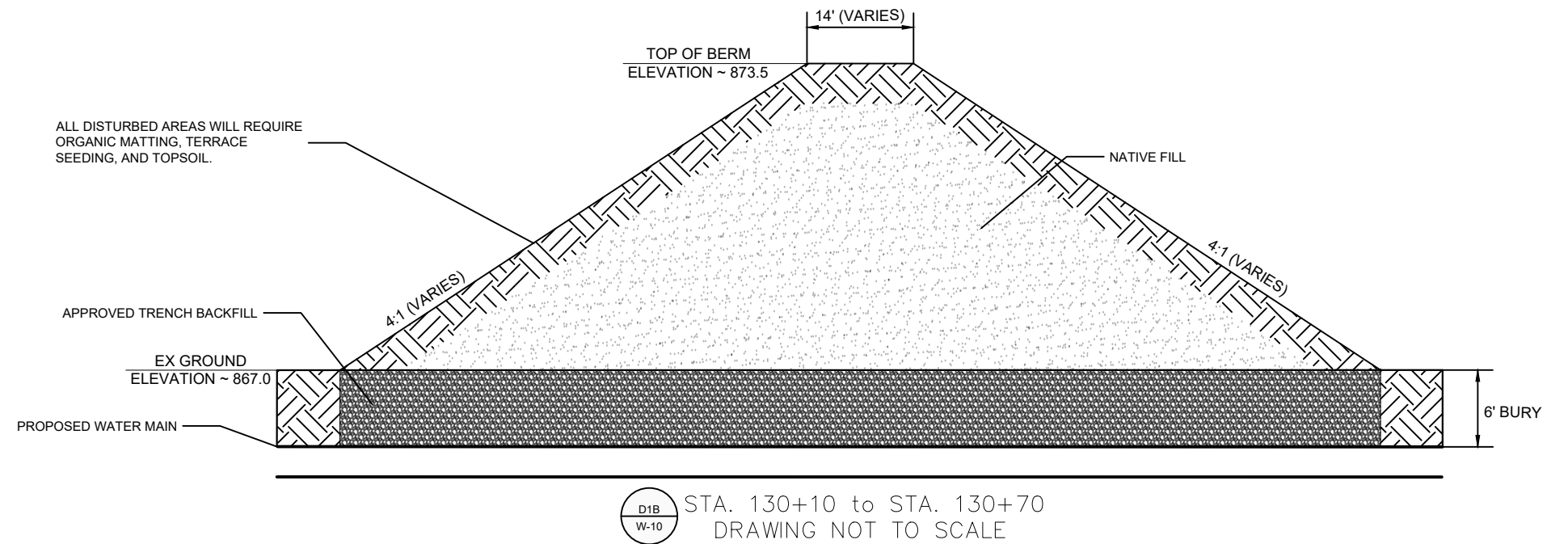
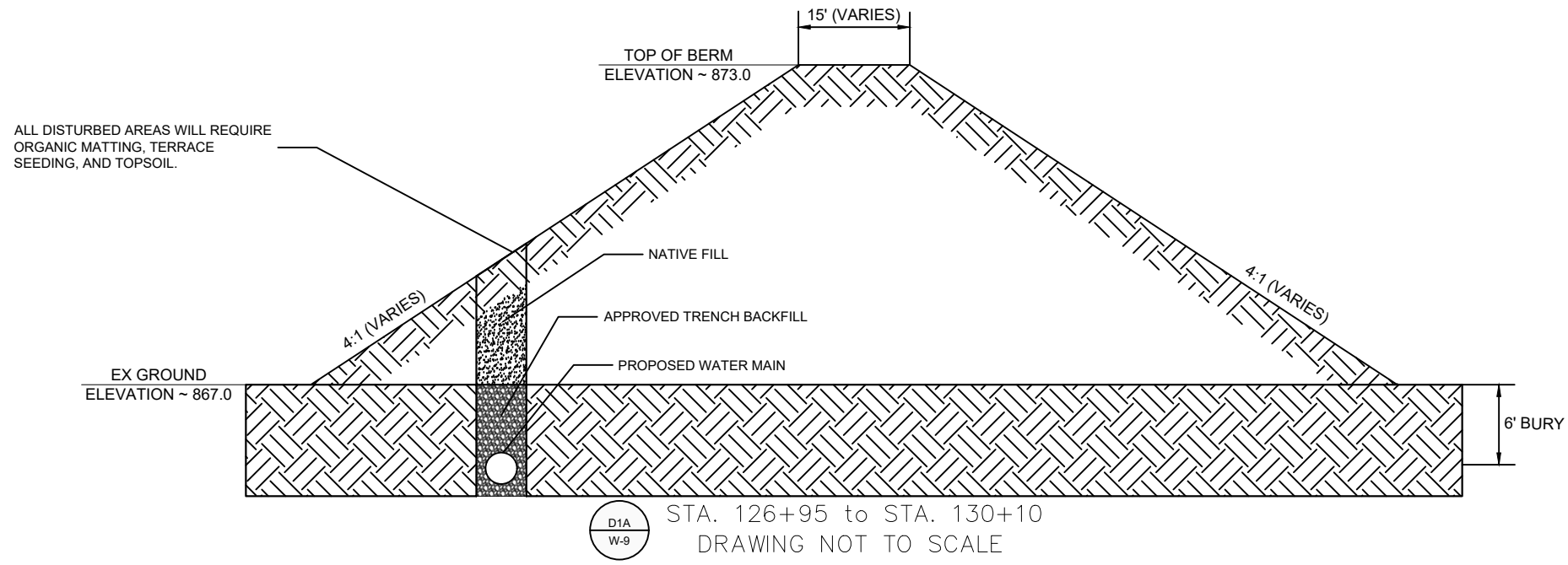
REVISION	DATE	BY

15165  
 MADISON, WI  
 9593  
 CONTRACT NO:

WATER ESTIMATE OF MATERIALS  
 PRESSURE ZONE 4 INTERSTATE CROSSING  
 M:\DESIGN\Projects\15165\CAD\Water\15165 WU Materials.dwg



15165  
 W-11



MARK	REVISION	DATE	BY

15165  
MADISON, WI  
9593  
CONTRACT NO:

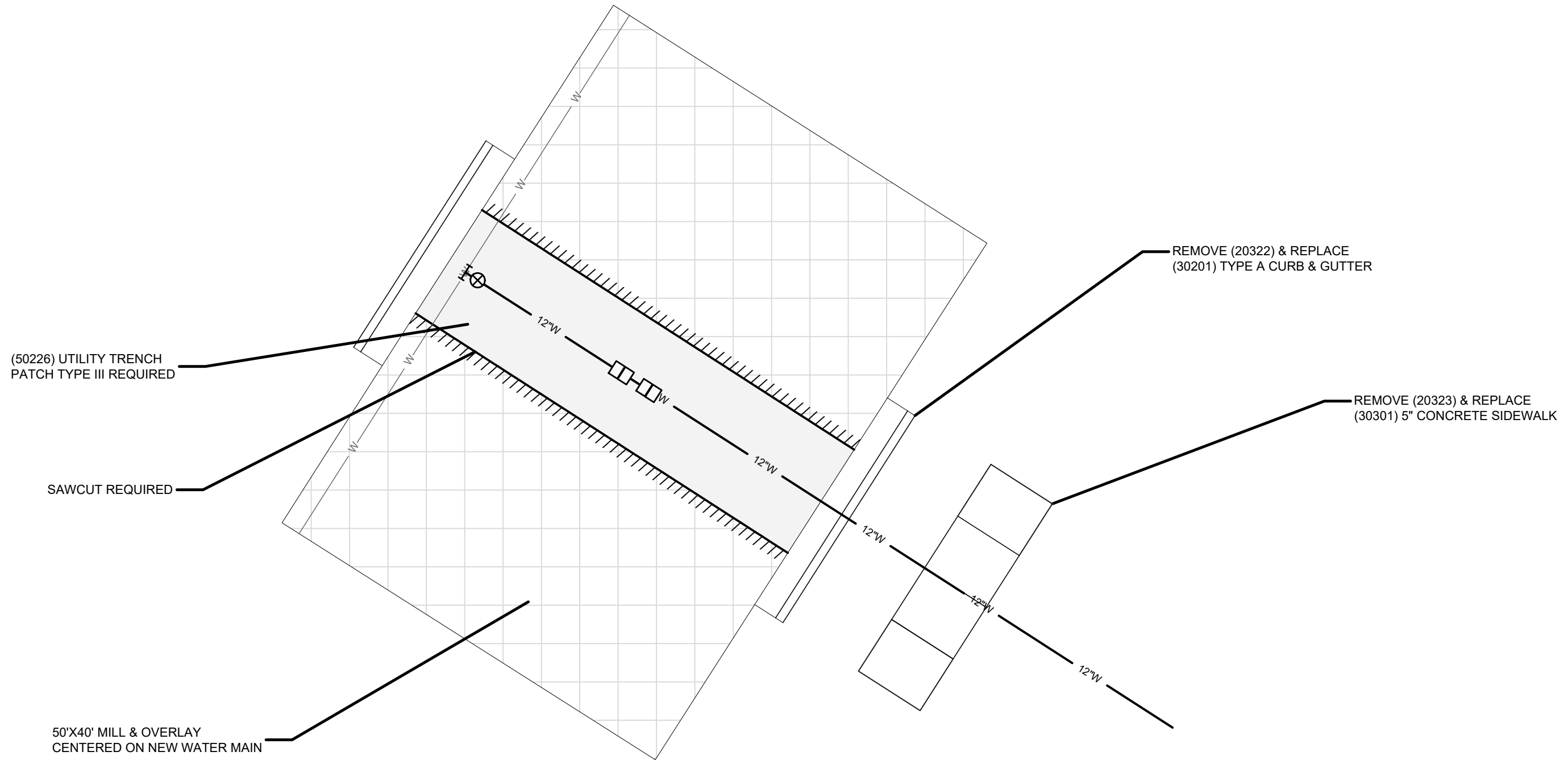
BERM REMOVAL & RESTORATION  
PRESSURE ZONE 4 INTERSTATE CROSSING  
M:\DESIGN\Projects\15165\CAD\Water\15165WU - PressureNetwork.dwg



15165  
D-1

Notes:  
 SEE ARTICLES 302, 303, 305 & 502 OF THE  
 CITY OF MADISON STANDARD  
 SPECIFICATIONS FOR PUBLIC WORKS  
 CONSTRUCTION, 2018 EDITION.

D2 PAVEMENT REMOVAL & RESTORATION  
 W-10 DRAWING NOT TO SCALE



(50226) UTILITY TRENCH  
 PATCH TYPE III REQUIRED

SAWCUT REQUIRED

50'X40' MILL & OVERLAY  
 CENTERED ON NEW WATER MAIN

REMOVE (20322) & REPLACE  
 (30201) TYPE A CURB & GUTTER

REMOVE (20323) & REPLACE  
 (30301) 5" CONCRETE SIDEWALK

MARK	REVISION	DATE	BY
15165	15165	5/17/2025 9:39 AM	15165

15165  
 MADISON, WI  
 9593  
 CONTRACT NO:

PAVEMENT REMOVAL & RESTORATION  
 PRESSURE ZONE 4 INTERSTATE CROSSING  
 M:\DESIGN\Projects\15165\CAD\Water\15165WU - PressureNetwork.dwg



15165  
 D-2